



British Columbia
Recreation & Parks
Association

SHAPING
HEALTHIER
FUTURES

OUR YEAR IN REVIEW

● ANNUAL REPORT 2025-26

A BOLD NEW LOOK

New narrative, website, materials and sense of purpose to move us forward. Explore at:

 bcrpa.bc.ca

Rebranding that redefined who we are



Fresh, modern logo, colours and identity that brings out the best in us.

MORE MEMBERS, MORE IMPACT

5472 
members
+600 from last year

2810 
fitness leaders
+138 from last year

110 
local governments
+7 from last year


7 
First Nations communities
+3 from last year

PROGRAMS THAT DELIVERED

223 
trainings
~2500 attendees
15,700+ hours of professional development

All sold out or near capacity events


- BCRPA Symposium
- Parks Professional Pathways
- BCFit
- Ripple Effects

181 
public programs
31% increase from last year

Significant increase in participants

46% ▲ ActivAge
23% ▲ Choose to Move

HEALTHIER COMMUNITIES

95% 
of BC population served by BCRPA members
171 cities serviced by Fitness Leaders

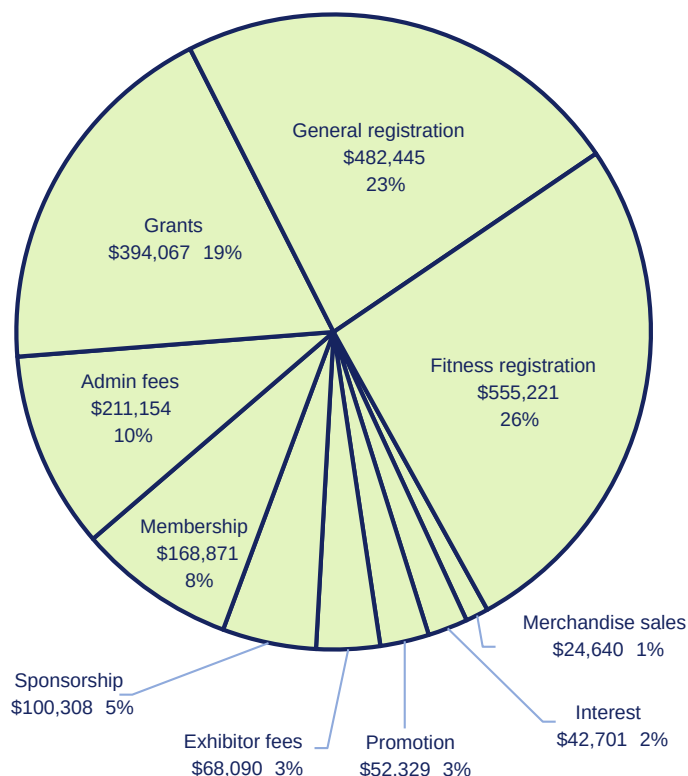
15+ 
partners

Collaborating for change
Provincial and national partnerships and advocacy to innovate, build social infrastructure and make progress towards our commitments

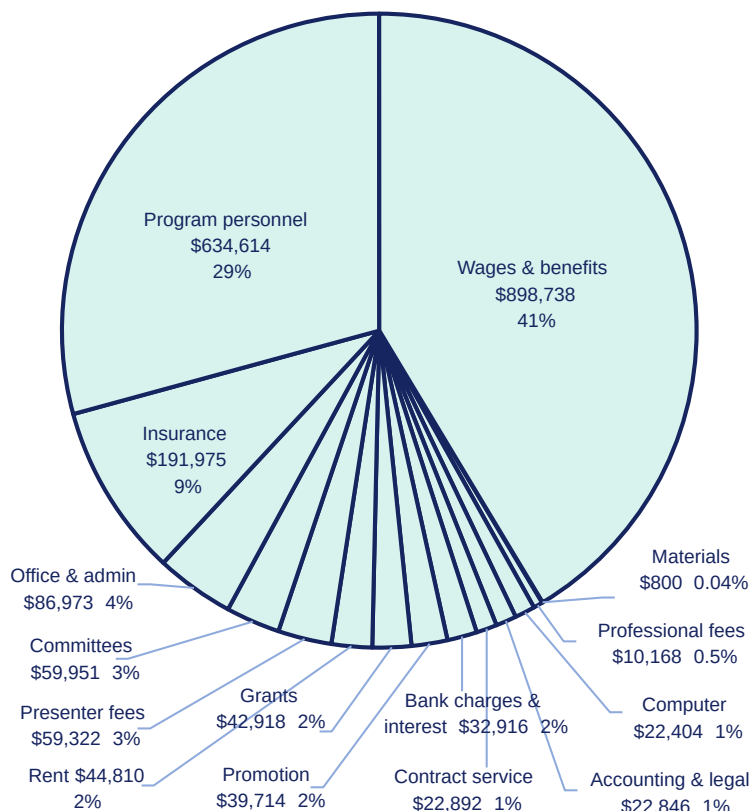
● THE VALUE WE CREATE IS MEASURED BY THE DIFFERENCE WE MAKE

BCRPA STATEMENT OF FINANCIAL POSITION 2025

● REVENUE = \$2,099,826



● EXPENSES = \$2,171,041



As at December 31, 2025 (unaudited) 2025

ASSETS	\$
CURRENT ASSETS	
Cash and cash equivalents	1,454,429
GST/HST receivable	0
Accounts receivable	11,324
Prepaid expenses	94,123
TANGIBLE CAPITAL ASSETS	18,553
TOTAL ASSETS	1,578,429

LIABILITIES

CURRENT LIABILITIES	
Accounts payable and accrued liabilities	93,630
GST/HST payable	797
Wages and benefits payable	9,280
Deferred revenue	529,068
	632,775

FUND BALANCES

Unrestricted	900,654
Internally Restricted	45,000
TOTAL LIABILITIES & FUND BALANCES	1,578,429

As at December 31, 2025 (unaudited) 2025

CASH FLOWS FROM OPERATING ACTIVITIES	\$
Excess of revenue over expenses	(76,581)
Items not requiring the outlay of cash:	
Depreciation	5,366
	(71,215)

Change in non-cash working capital items:

Accounts receivable	6,739
Prepaid expenses and deposits	(1,356)
Accounts payable and accrued liabilities	39,266
GST/HST payable	(941)
Wages and benefits payable	9,280
Due to government agencies	(19,313)
Deferred revenue	128,874
	162,549
	91,334

CASH FLOWS FROM INVESTING ACTIVITIES

Purchase of tangible capital assets	(5,013)
-------------------------------------	---------

INCREASE (DECREASE) IN CASH	86,321
CASH, BEGINNING OF YEAR	1,368,108
CASH, END OF YEAR	1,454,429